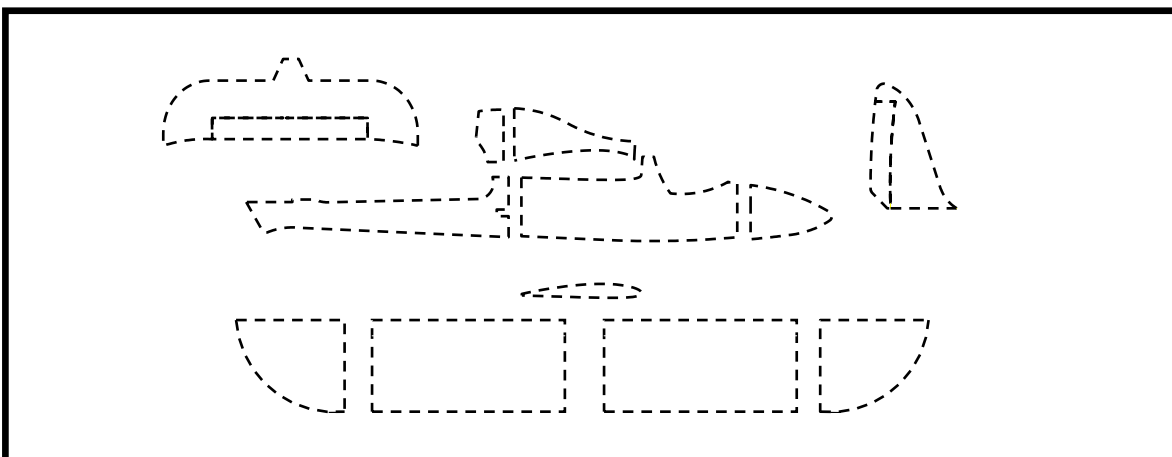


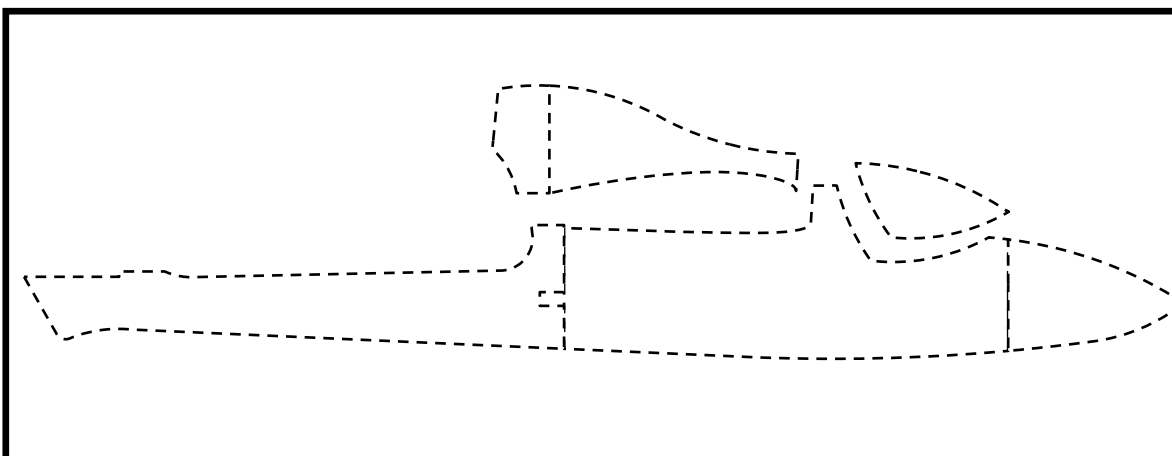
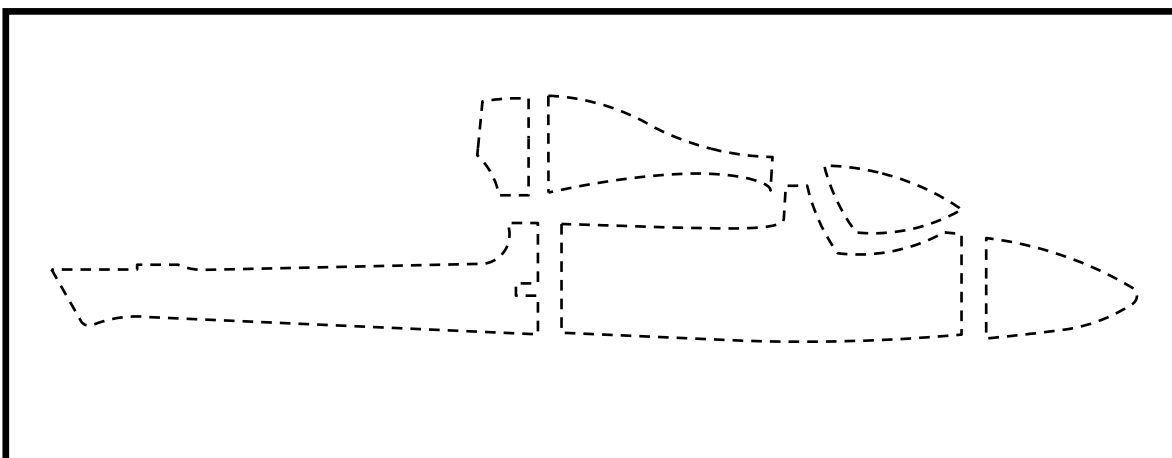
# Esquema de montagem Planador Easy Flite 1,80 de asa

## Parte 1

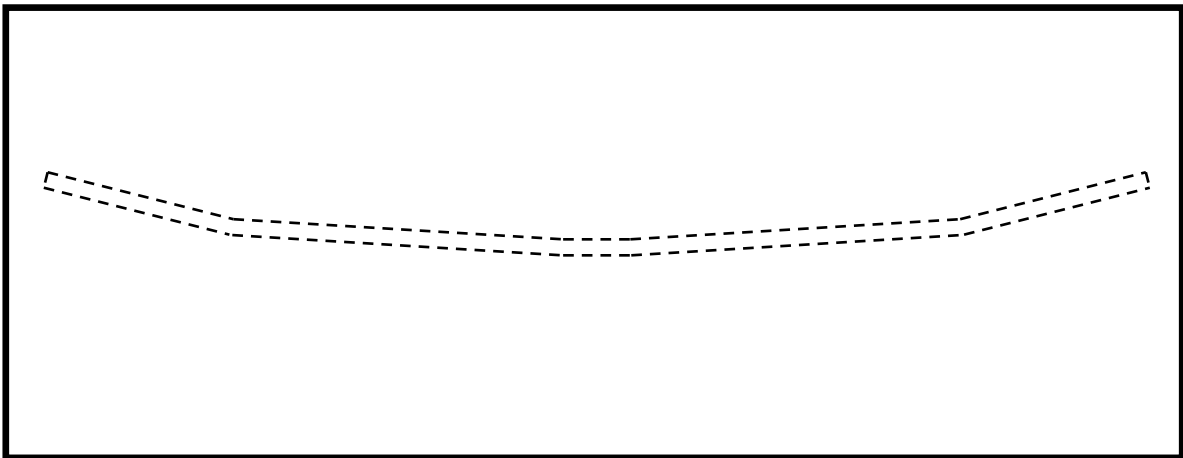
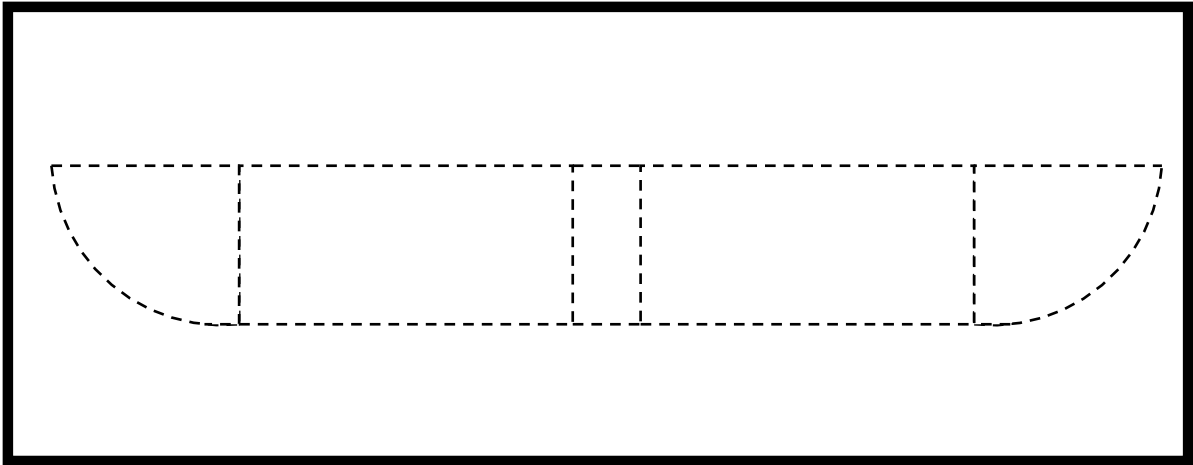
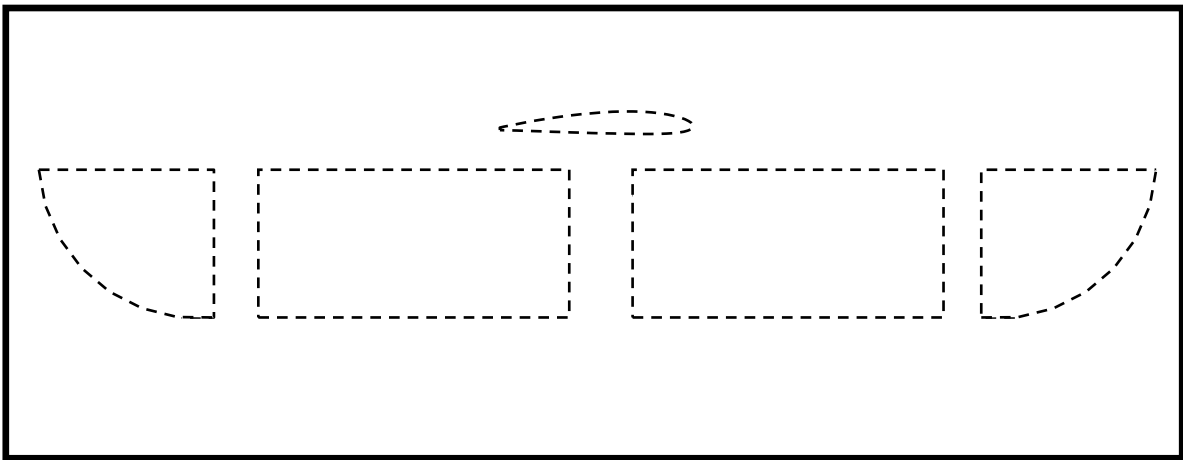
### Peças



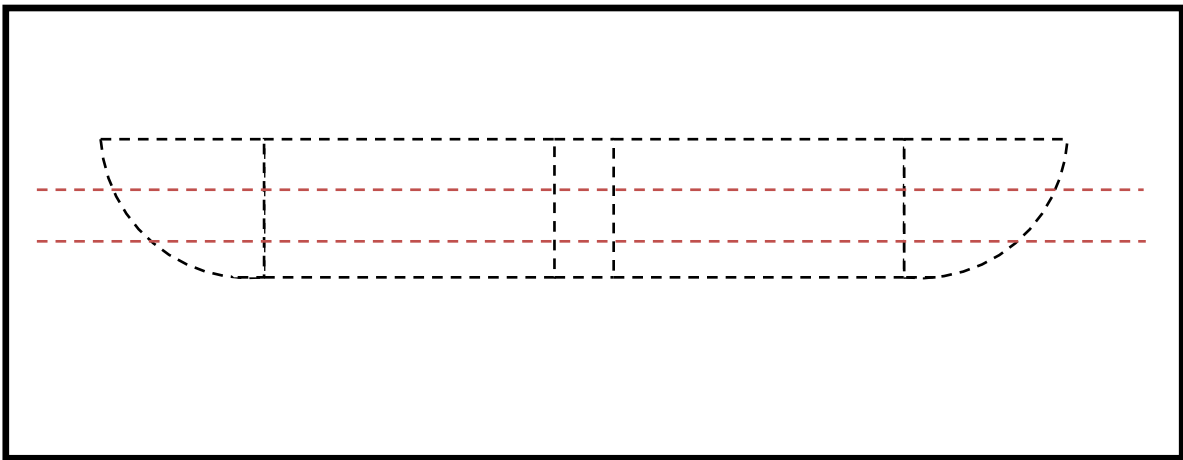
## Parte 2 Fuselagem



## Parte 3 Colagem asa



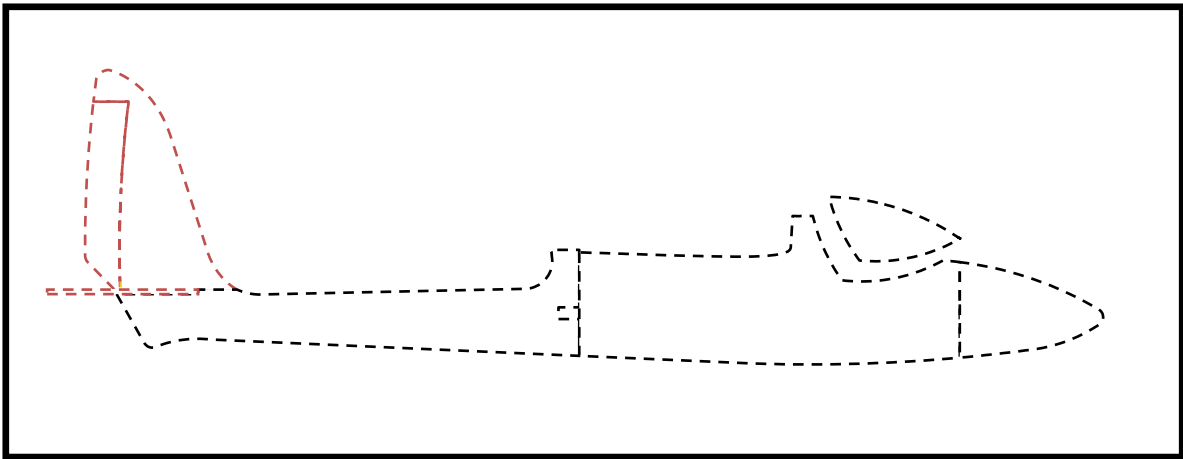
Reforços da asa



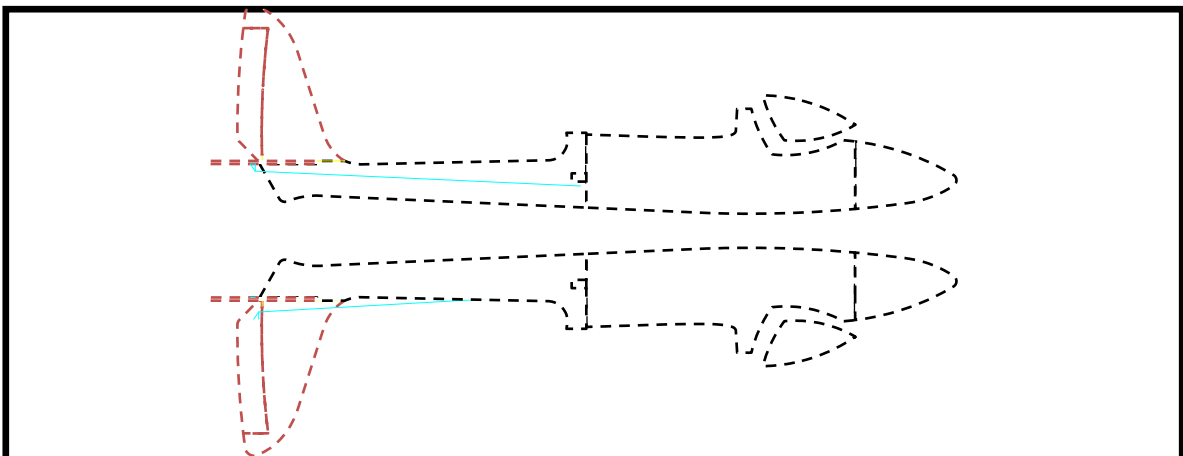
Parte 4 .

Depois de pintado ou entelado as partes. Começa a calagem do leme e profundor e eletrônica.

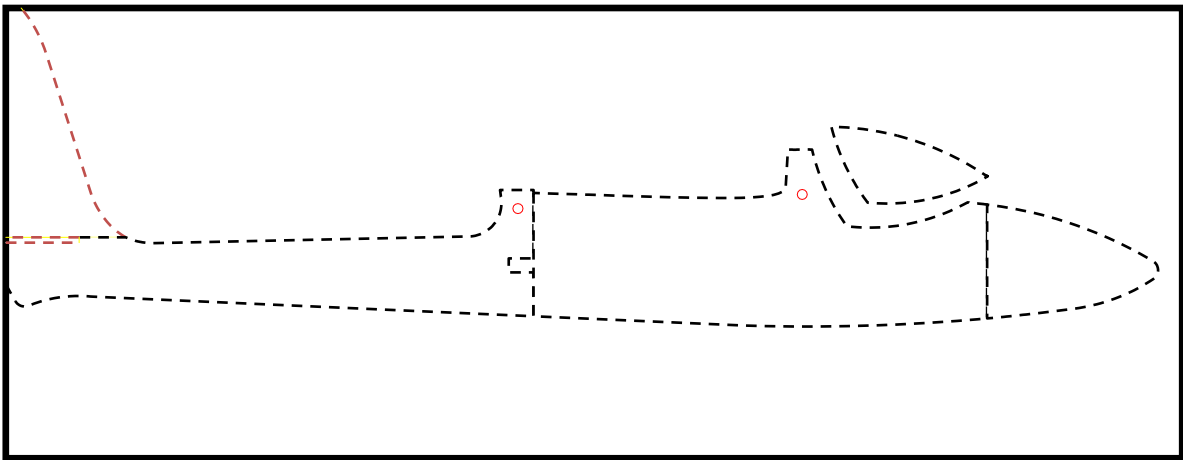
Uma dica usa fita crepe ou filamentosa para fazer as dobradiças dos ailerons.



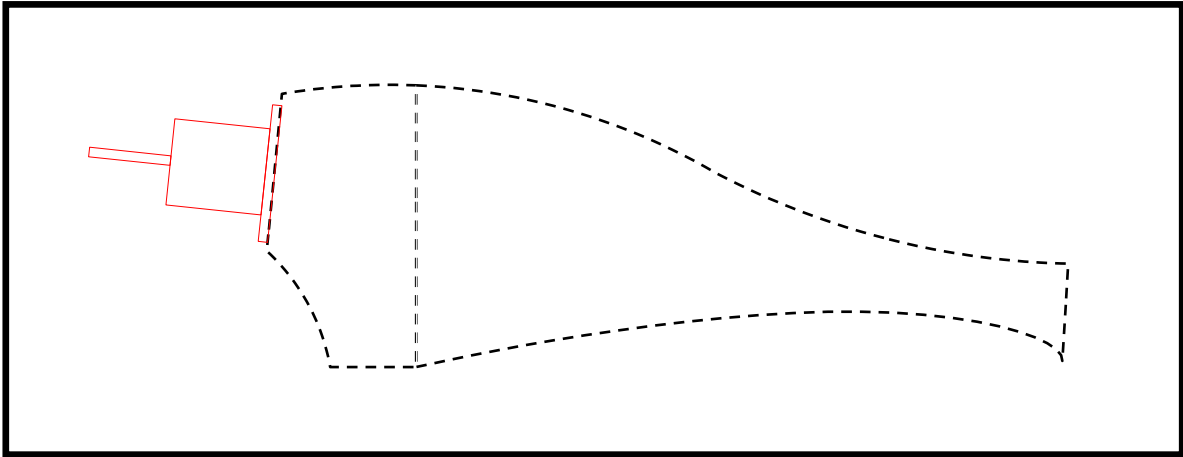
Servos do leme e profundor



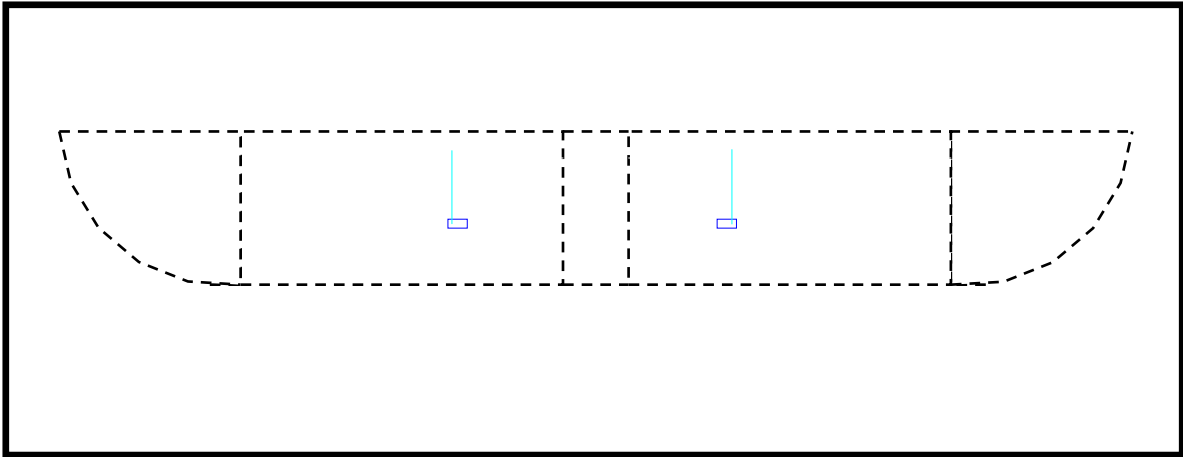
Asa fixa pontos em vermelho

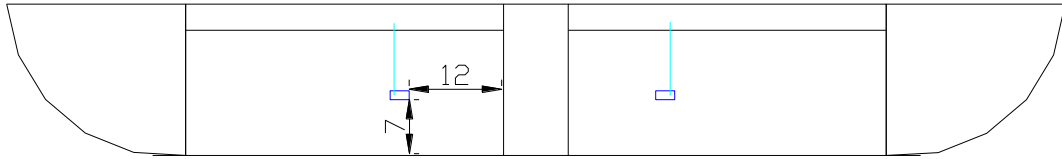


Fixação do motor pode ser feita com auxílio de uma madeira

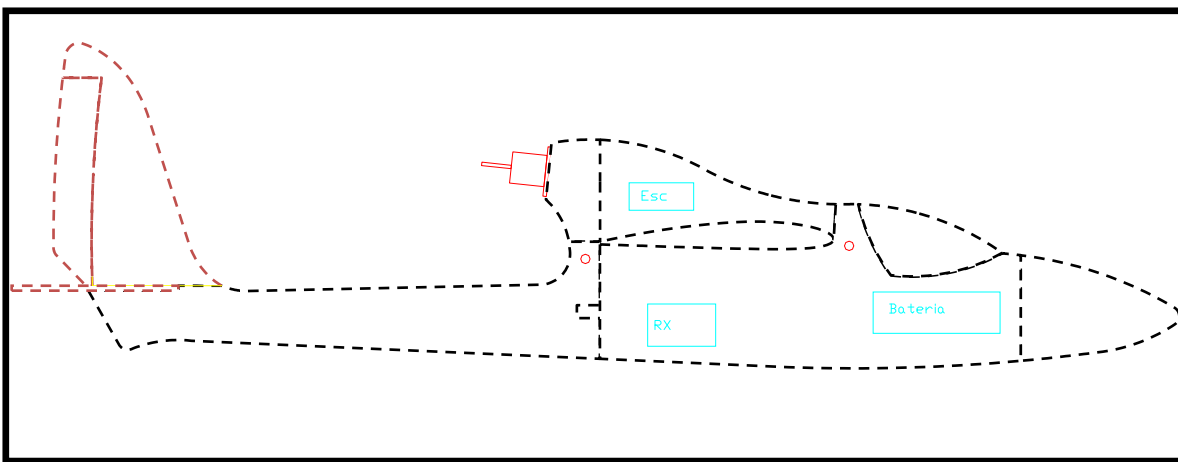


Servos da Asa, instalado na parte de baixo





Distribuição da eletrônica.



O cg do aeromodelo esta a 8,7cm do brodo de ataque, esta medida é feita pela parte mais larga da asa ( raiz).

Para colagem das partes utilize cola quente ou epox.

Bons voos